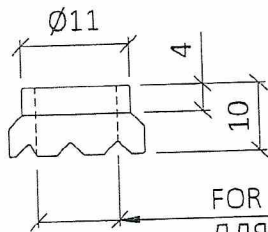
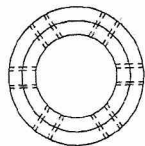
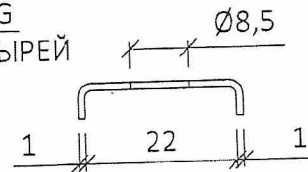
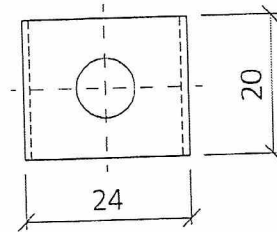


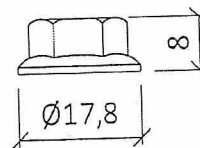
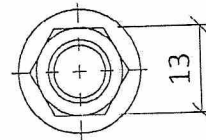
STUD M8
 QUALITY: AISI 304
ШТЫРЬ M8
 МАТЕРИАЛ: AISI 304



CERAMIC FERRULE
 QUALITY: AISI 304
КЕРАМИЧЕСКИЙ ФИТИНГ
 МАТЕРИАЛ: AISI 304



CLAMP
 QUALITY: AISI 304
 ONLY USED WITH ITEM 81
ХОМУТ
 МАТЕРИАЛ: AISI 304
 ДЛЯ ИСПОЛЬЗОВАНИЯ ТОЛЬКО С ИЗДЕЛИЕМ 81



FLANGE HEX NUT M8
 QUALITY: AISI 304
ШЕСТИГРАННАЯ ГАЙКА С БУРТИКОМ M8
 МАТЕРИАЛ: AISI 304

ITEM No. № ИЗДЕЛИЯ	LENGTH "B" ДЛИНА В	USE FOR ИСПОЛЬЗОВАТЬ ДЛЯ	TYPE ТИП
81	B=50mm	RX-2	AISI 304
82	B=57mm	LOC TYPE, C-CHANNEL	AISI 304



THIS DOCUMENT IS THE PROPERTY OF CHICAGO BRIDGE & IRON COMPANY ("CB&I"). IT MAY CONTAIN INFORMATION DESCRIBING TECHNOLOGY OWNED BY CB&I AND DEEMED TO BE COMMERCIALY SENSITIVE. IT IS TO BE USED ONLY IN CONNECTION WITH WORK PERFORMED BY CB&I. REPRODUCTION IN WHOLE OR IN PART FOR ANY PURPOSE OTHER THAN WORK PERFORMED BY CB&I IS FORBIDDEN EXCEPT BY EXPRESS WRITTEN PERMISSION OF CB&I. IT IS TO BE SAFEGUARDED AGAINST BOTH DELIBERATE AND INADVERTENT DISCLOSURE TO ANY THIRD PARTY.



STUD FULLY THREADED STUD M8/M4
ШТЫРЬ С РЕЗЬБОЙ ПО ВСЕЙ ДЛИНЕ M8/M4
STEAM REFORMER H-4101
УСТАНОВКА ПАРОВОГО РЕФОРМИНГА H-4101



FOR: CB&I TYLER, TEXAS

SCALE:	DRAWN: BS	CK'D: IBA	APPD: -	DATE: 2016-11-08
PROJECT NO: 2001600549	DWG NO: 12877	SHEET 9		REV: 1